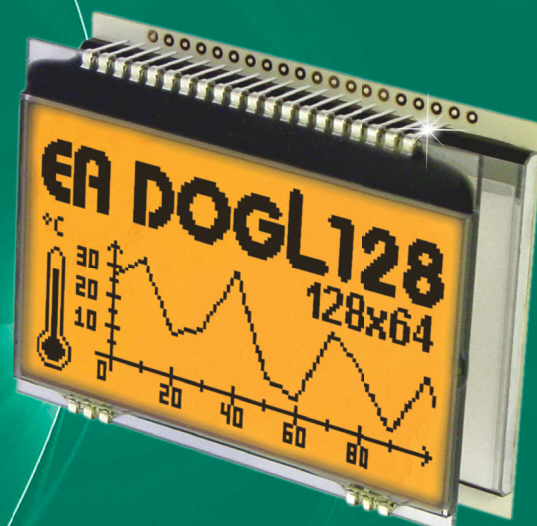
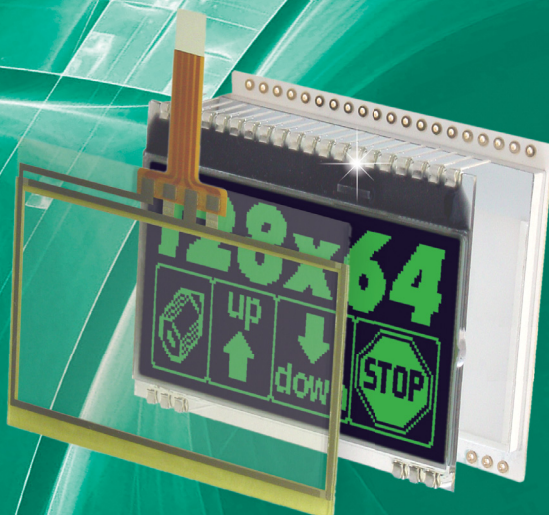
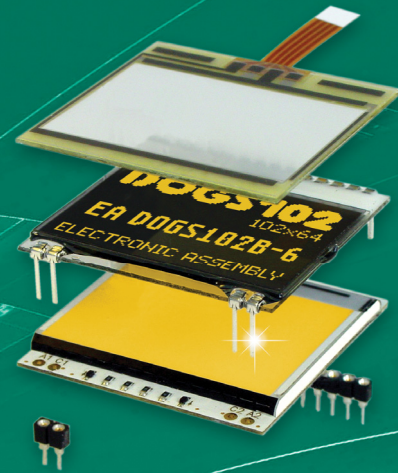


## DOG Series Slimline Displays with Pins

- super flat: 2.0~6.5 mm
- Graphic 102x64 to 128x64 to 240x64 to 240x128
- Character 1x8, 2x16, 3x16, 4x10, 4x20
- real 3.3 V operation
- SPI interface, low power: from 150  $\mu$ A
- display and backlight separate
- white LED B/L do run from 3 mA
- Standard displays



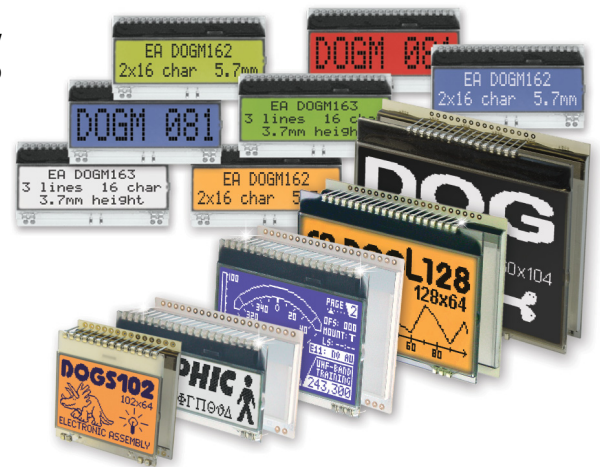
# Flexible in Design

## Text and Graphic + SPI + 3.3V

### „Why again a new display series?“

.. you may ask yourself. Quite so, but this series is a completely new development, offering a range of innovations and benefits like no other:

- \* single supply +3.3 V operation
- \* alternative 5 V operation (1x8, 2x16, 3x16)
- \* SPI interface (character also 4-/8-bit interface)
- \* I<sup>2</sup>C and SPI for EA DOGXL160-7, DOGM240-6, DOGXL240-7
- \* can be soldered directly into PCB
- \* flat with 2.0 mm to 5.8/6.5 mm with backlight
- \* outline dimensions from 39x41 mm to 94x67 mm
- \* T<sub>op</sub> -20..+70°C, integrated temperature compensation
- \* 7 Graphic displays from 102x64 to 240x128
- \* 4 Character displays 1x8, 2x16, 3x16, 4x10(2x10), 4x20
- \* no minimum quantity, shortest delivery time

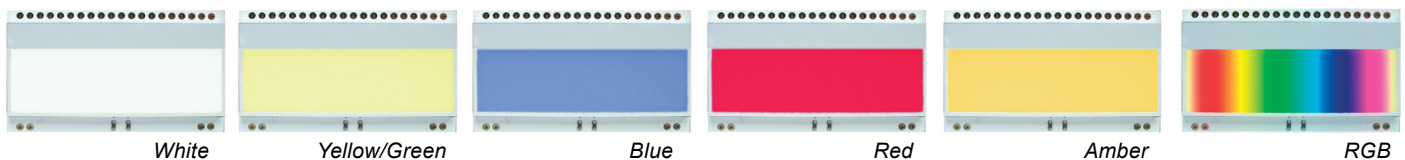


### Put together the display you want

We separated the display and the backlight to allow you to use a standard display with an individualized look. All DOG displays and its backlights are available as standard products regardless of desired quantity. Create your personalized solution when you combine display and backlight during production. No screws or cable required. Simply clip the display and backlight unit together, with up to 63 possible combinations. For graphic displays, an analog touch panel is available.

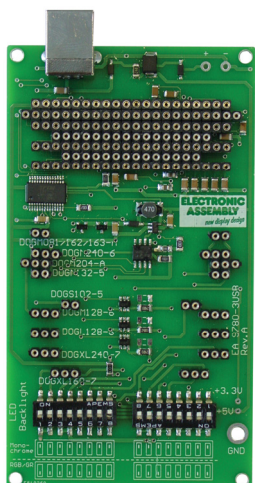
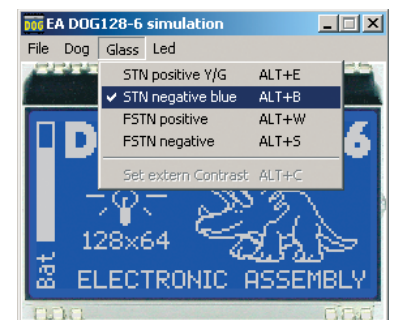
### Different backlight units

Choose from 7 different illumination colors to suit the most diverse designs. With RGB type, all colors can be set individually. With white being the most efficient and providing the brightest illumination.



### Simulation for Windows

FREE Simulator software allows all displays and colors to be simulated on a PC. Display individual text and pictures with the Simulator available for free download from our website: [https://www.lcd-module.de/fileadmin/downloads/startdog\\_v46.zip](https://www.lcd-module.de/fileadmin/downloads/startdog_v46.zip)



### USB Test board EA 9780-4USB

For a quick and easy start, we do provide an USB test board for PC connection (includes USB cable and the above-mentioned Simulation software). With the test board, text and pictures (BMP) can be displayed immediately and works for all EA DOG displays.

### Character set and FontEditor

Multiple character sets are available as the EA USBSTICK-FONT. The FontEditor software allows you to edit all fonts and create new ones (e.g. Cyrillic, Greek, Hebrew). Connect the USB Testboard and watch just edited characters live on the display. Also includes an export function for C- and Basic source codes.

